

PRODUCT:            QUANTITY:  
ITEM #:Models:  SHFW2D  SHFW3D  SHFW4D  SHFW5D  SHFW6D

## Bid Specifications

Heavy-duty Top mount insulated Rectangular Drop-In Food Well designed for installation in metal or wood countertops. Hot Food Well is designed to accommodate standard size steamtable pans. Well is constructed of deep-drawn 20 ga. Type 304 stainless steel, above countertop with 20 ga. aluminized outer housing with sides and bottom fully insulated. Units shipped with drain are provided with stainless steel 1/2" NPT drain welded to bottom of pan provided with removable screen. Unit is heated by a tubular heating element shaped in serpentine fashion for even heat distribution to pan base.

Element is mounted under well and secured by aluminized deflector shield for maximum efficiency. Unit standard with APW Wyott E-Z Locks on all four exterior sides for easy installation. The units feature complete UL construction including electrical conduit, bezel and control box.

## Standard Features

- 20 ga. Deep-drawn Type 304 stainless steel well pans.
- Stainless steel drain coupling.
- Units maybe used WET or DRY (Wet offers best result)
- Easy access to heating elements
- Compact housing—overall depth 8-11/16" and 11 1/2" over all drain manifold
- Large indicating pilot light
- Multiple units can be
- Simplified construction reduces installation time and significantly reduces on-site electrical and plumbing costs
- Unitized electrical wiring for single power hookup
- Individual infinite controls

## Reliability backed by APW Wyott's Warranty

- Backed by a 1 year parts & labor warranty.
- Food Wells are Certified by the following agencies:



SANITATION

HFW-6 not CSA approved

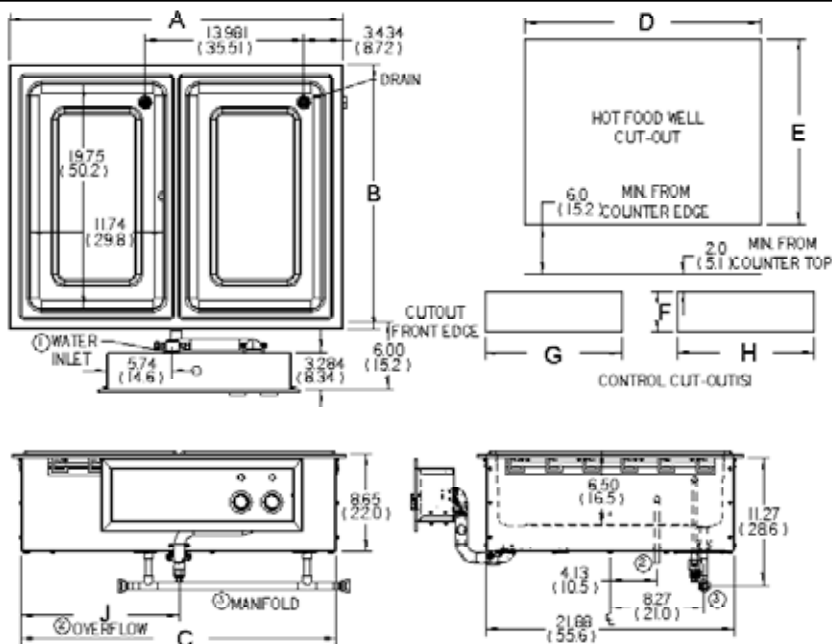
**SHFW3D Shown**

## Options

- Factory assembled 3/4 manifold drains- screens provided
- Thermostatic control (effective 26")
- Lever operated drain valve (56360)
- Three phase (Specify)
- With drain (D designates Drain)

*See reverse side for product specifications.*

PRODUCT:                      QUANTITY:  
ITEM #:



### GENERAL SPECIFICATIONS (APW EZFILL HOT FOOD WELLS)

MODEL	OUTSIDE DIMENSIONS				CUT OUT		CONTROL CUT OUT			SHIP WT.
	A	B	C	J Overflow	D	E	F	G	H	
FWEZ-2D WB	29.42" (74.2)	23.44" (59.5)	27.79" (70.6)	13.87" (35.2)	28.5" (72.4)	22.5" (57.2)	5.0" (12.7)	16.50" (41.9)	n/a	48 Lbs. (21.8 Kg)
SHFWEZ-3D WELL	43.46" (110.4)	23.44" (59.5)	41.83" (106.2)	27.92" (70.9)	42.5" (108.0)	22.5" (57.2)	5.0" (12.7)	33.50" (85.1)	n/a	68 Lbs. (30.8 Kg)
SHFWEZ-4D WELL	57.50" (146.0)	23.44" (59.5)	55.87" (141.9)	27.92" (70.9)	56.5" (143.5)	22.5" (57.2)	5.0" (12.7)	16.50" (41.9)	12.50"	98 Lbs. (44.4 Kg)
SHFWEZ-5D WELL	71.54" (181.7)	23.44" (59.5)	69.92" (177.6)	41.96" (106.6)	70.5" (179.1)	22.5" (57.2)	5.0" (12.7)	33.50" (85.1)	n/a	118 Lbs. (53.5 Kg)
SHFWEZ-6D WELL	85.59" (217.4)	23.44" (59.5)	83.96" (213.2)	41.96" (106.6)	84.50" (214.6)	22.5" (57.2)	5.0" (12.7)	33.50" (85.1)	n/a	260 Lbs. (117.9 Kg)

### OPTIONS

Description: Lever Operated Drain Valve      Stock No.: 56360      Drain Manifold: Fabricated to Unit, Required

### ELECTRICAL SPECIFICATIONS

MODEL	Electrical Ratings 1200 EA. @ 208V / 1600 EA. @ 240V				Electrical Ratings 1600 EA. @ 208V			
	Volts	Watts	Amps 1-Phase	Max Amps 3-Phase	Volts	Watts	Amps 1-Phase	Amps 3-Phase
SHFWEZ-2D	208/240	2400/3200	14-Dec	12-Oct	208	3200	16	14
SHFWEZ-3D	208/240	3600/4800	18 / 20	12-Oct	208	4800	23	14
SHFWEZ-4D	208/240	4800/6400	24 / 27	16 / 18	208	6400	31	21
SHFWEZ-5D	208/240	6000/8000	29 / 34	20 / 24	208	8000	39	27
SHFWEZ-6D	208/240	7200/9600	35 / 40	20 / 24	208	9600	47	27

NOTE: CUT-OUT SIZES ARE DIFFERENT FROM STANDARD APW HFWS

\*APW Wyott reserves the right to modify specifications or discontinue models without incurring obligation.